

Corner Counties Empowerment Area

**Fremont
County**



**Page
County**

Contact(s) for Area:

Pam Herzberg/Empowerment Director
Corner Counties Empowerment Area
Page County Courthouse
112 East Main Street
Clarinda, IA 51632
Ph: (712)542-3123
FAX: (712)542-2180
E-mail: ccea@heartland.net
Website: <http://www.co.page.ia.us/offices/empowerment/index.htm>

Kim Behrens/Chairperson
Page County Treasurer
Page County Courthouse
112 East Main Street
Clarinda, IA 51632
Ph: (712)542-5310

Vision: “Every child, beginning at birth, will be healthy and successful.”

Mission: “The Corner Counties Empowerment Area Board will collaborate with community resources to nurture children so they will grow safe, healthy, socially well adjusted, and ready to learn.”

“This letter is to sincerely thank the Empowerment program for providing the opportunity for my children to attend preschool. I would have been unable to afford tuition for both of my kids so it is a double blessing that you were able to assist me. Thank you a million times for rewarding my children with the scholarships that enable them to enjoy preschool classes.”
Submitted to the Corner Counties Empowerment Board by a parent of Fremont County preschoolers.

Did you know? Preschool Programming Support funds within the Corner Counties Empowerment Area made it possible for families with preschool age children to send their children to preschool, receive an oral screening with a fluoride varnish, receive a lead screening, participate in a research based health and activity program, and take part in a research based behavior modification classroom.

Why are the programs we support important to reaching our vision and mission?

- They provide an opportunity for all children to afford a high quality early learning environment.
- They provide families with children 0-5, resources, support, and encouragement.
- They provide caregivers and teachers professional development opportunities that will be reflected within the quality of the early learning environment.
- They provide children 0-5 opportunities for health screenings that have the potential to eliminate obstacles that could affect the child’s learning ability.

- COMMUNITY PLAN PRIORITIES:**
1. High quality child care/preschool environments
 2. Family support opportunities
 3. Support for research-based, evidence based or best practices approach
 4. Health status of children
 5. Professional development opportunities

Services, Programs, and Activities supported by the Corner Counties Empowerment Board

- Child Care Nurse Consultant
- Child Care Home Consultant (CCR&R)
- Grandma’s House Daycare Security System
- Multiple Child Care Center Quality Improvement/Support Incentives
- Empowerment Service Coordination
- Positive Family Program
- Growing Strong Families Programs
- Stork’s Nest
- Preschool Tuition and Transportation Grants
- Oral Screenings with varnishes within Preschools
- Lead Screenings within Preschools
- Color Me Healthy – Activity and Health Activity
- Dinosaur School
- Early Childhood Institute
- ECERS Observation and Consultation
- Extreme Makeover Project
- Child Abuse Awareness Activity
- Child Fair
- Welcome Baby

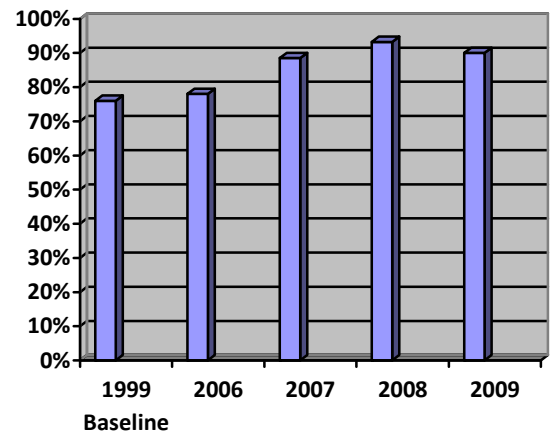
Did you know?

- **Participating in high quality early childhood care and education programs can have positive effects on children’s cognitive, language, and social development, particularly among children at risk.** (Source: National Research Council and Institute of Medicine (2000). *From Neurons to Neighborhoods: The Science of Early Child Development.*)
- **Nationally, children miss more than 51 million school hours each year due to dental disease.** (Source: U.S. Department of Health and Human Services, *Oral Health in America*).
- **If not detected early, the lead that accumulates in a child’s body may cause brain damage, mental retardation, developmental delay, learning difficulties, behavior problems, anemia, liver and kidney damage, hearing loss, hyperactivity, and in extreme cases, even coma and death.** (Source: *Childhood Lead Poisoning Prevention: A Call to Action*).
- **1 in 5 children has a diagnosable mental disorder, but factors that predict mental health problems can be identified in the early years.** (Source: *New Freedom Commission on Mental Health* and Jane Knitzer and Jill Lefkowitz, *Helping the Most Vulnerable Infants, Toddlers, and Their Families*).

Corner Counties Empowerment Area Indicator The number of children entering kindergarten with preschool experience.

The graph at the right reflects the trend of the percentage of children entering kindergarten in Fremont and Page Counties that enter with preschool experience.

For many families the cost to send their child to preschool is a hardship. Therefore many parents do not view preschool as an affordable option for their child. More information has been provided to families regarding high quality preschools and the benefit of children attending such preschools.



What did our “Preschool Programming Support” funds do to ensure that children grow safe, healthy, socially well adjusted and ready to learn?

123 Children attended preschool because they received full preschool tuition scholarships.
88 Children attended preschool due to accessible transportation.

208 Preschool children received an oral screening that is required for kindergarten entrance. (52% of all preschool children)
16% of those screened appeared to need further dental services.

169 Preschool children received a lead screening that is required for kindergarten entrance. (42% of all preschool children)
.59% of all those screened were identified as lead poisoned.

205 Preschool children participated in a research based activity and health program “Color Me Healthy”.
86% of those children improved their recognition of fruits and vegetables and are more willing to try new fruits and vegetables.

30 Preschool children participated in a research based behavior modification classroom, Dinosaur School.
9% decrease of negative behaviors in the classroom as reported by teachers.

What can you do to help?

- Share this information with others.
- Have discussions with expecting families or those with children ages 0-5.
- Request information as to how you can become a Corner Counties Empowerment Area Board Member.
- Get involved.