

# CORNER COUNTIES EMPOWERMENT AREA



**Counties in Area:** Fremont and Page

**Contact for Area:**

Pam Herzberg  
Empowerment Director  
112 East Main Street  
Clarinda, IA 51632  
PH: (712)542-3123  
[ccea@heartland.net](mailto:ccea@heartland.net)

Kim Behrens  
Corner Counties Empowerment Chairperson  
112 East Main Street  
Clarinda, IA 51632  
PH: (712)542-5322  
[kbehrens@co.page.ia.us](mailto:kbehrens@co.page.ia.us)

**Vision and Mission:**

**Vision:** "Every child, beginning at birth, will be healthy and successful."

**Mission:** Corner Counties Empowerment Area (CCEA) will support their communities in nurturing children so they arrive at school safe, healthy, socially well adjusted and ready to learn.

**Community Plan Priorities:**

- High quality child care/preschool environments
- Family support opportunities
- Support for research-based, evidence-based or best practices approach
- Health status of children
- Professional development opportunities

**Local Indicators:**

- Immunized children by age 2
- Number of preschools
- Number of children entering kindergarten with preschool experience
- Employment rate
- Number of registered home childcare providers
- Number of licensed child care centers
- Number of births to moms under age 20

**How we are collaborating to impact the priorities:**

The Corner Counties Empowerment Board (CCEA) members and the Empowerment Director speak at civic and public interest meetings regarding empowerment history, local indicators, local priorities, funding, current projects, and past projects continually emphasizing the importance and need to build upon the early childhood system. The CCEA Board has an established relationship with all local newspapers within both counties and provides routine press releases regarding empowerment, funding, and projects. This past year CCEA had several feature articles within the local newspapers and local radio station interviews. The CCEA Board is represented by the Empowerment Director and numerous Board members at the Fremont County 0-5 Coalition Meeting, Page County Human Service Council Meeting, Fremont, Page, and Taylor Counties DCAT and Community Partnerships for Protecting Children Board Meetings, and the local Prevent Child Abuse Council.

This past year the CCEA Board formed two advisory committees as a means of information gathering and obtaining recommendations. Those committees are the Early Childhood Committee and the Preschool Exchange Group. Meeting notices are posted in the local papers and announced on the local radio station encouraging any individual interested in the local early childhood system to attend. The Early Childhood Committee is made up of early childhood stakeholders from both Fremont and Page

Counties that includes consumers, educators, service providers, law enforcement, medical providers, citizens, Empowerment Director, and CCEA Board members. This year members of the Early Childhood Committee collaborated to develop a community survey that was distributed within each community of Fremont and Page Counties from April 2008 thru August 31, 2008 and will be used to reevaluate CCEA's indicators and priorities.

The Preschool Exchange Group is comprised of preschool directors, school principals, teachers, teacher's assistants, Empowerment Director, and numerous CCEA Board members. The primary purpose of this group is to serve as an avenue for preschool staff to share ideas, identify issues, identify needs, and make recommendations to the CCEA Board. This group also serves as a vehicle for collaboration between the preschools.

The CCEA Board and Empowerment Director worked hard this past year to get more information out to the general public regarding Empowerment and the importance of a well defined early childhood system. The CCEA Board and Empowerment Director have well established working relationships with the providers as well as the providers amongst themselves. The Board encourages all early childhood providers within the two counties to work together to impact the priorities of the Empowerment area for the well-being of all children.

**Identify services/programs funded by Community Empowerment:**

Early Childhood Fund	<ul style="list-style-type: none"> <li>❖ Child Care Nurse Consultant</li> <li>❖ Child Care Home Consultant</li> <li>❖ Essex Child Care Center – Quality Improvement Projects</li> </ul>
School Ready Fund	<ul style="list-style-type: none"> <li>❖ Technical Assistance</li> <li>❖ Service Coordination</li> <li>❖ Positive Families (HOPES model)</li> <li>❖ Growing Strong Families – Fremont and Page Counties (PAT model)</li> <li>❖ Stork's Nest (Incentive Based Program)</li> <li>❖ Welcome Baby (Newborn Visit)</li> <li>❖ Preschool Tuition and Transportation</li> <li>❖ Professional Development for Providers – (Teachers earning credits toward early childhood degrees)</li> <li>❖ Early Childhood Institute (QPPS for Preschools)</li> <li>❖ Preschool Dental Screenings</li> <li>❖ Preschool Lead Testings</li> <li>❖ Color Me Healthy Preschool Project (Nutrition and Physical Activity)</li> <li>❖ Preschool Family Night (Parent Involvement Activity)</li> <li>❖ Child Care Assistance Grants</li> </ul>

# CORNER COUNTIES EMPOWERMENT AREA



**Key Identified Need/Priority:**

High quality child care/preschool environments

**Measurable Goal:**

90% of all children entering Kindergarten within the two county regions will enter with having had preschool experience.

**Why this important:**

Research indicates early education experience may provide lasting academic benefits. Research also indicates that high quality learning experiences are essential in achieving positive outcomes for children.

**State Result Linkage:**

Children ready to succeed in school

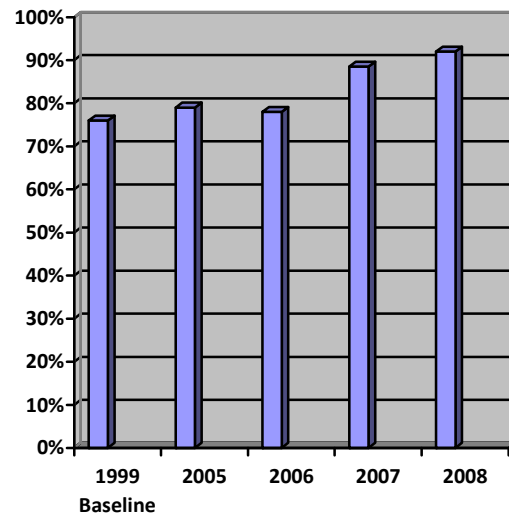
Key Community Indicator(s):	FY 05	FY06	FY 07	FY 08
Number (%) of children entering kindergarten with preschool experience (average of 8 school districts)	79%	78%	88.5%	93.25%

**Service, Product or Activity to impact the Key Need/Priority:**

Performance Measure(s)	FY 05	FY 06	FY 07	FY 08
Number of children that received tuition grants	NA	92	74	226
Percent of children demonstrating age appropriate skills	NA	NA	61%	97%

**Analysis of the Data/ Factors affecting the data:**

The CCEA Board in SFY'08 provided full (100%) tuition grants to those families whose income was within 200% of the Federal Poverty Level. The Board also put in place a sliding fee scale for those families that fell above the 200% of the Federal Poverty Level. In the past CCEA has not provided full tuition scholarships to families, nor implemented a sliding fee scale for those above the identified level of poverty. For many families the cost to send their child to preschool is a hardship. Therefore many parents do not view preschool as an affordable option for their child. More information has been provided to families regarding high quality preschools and the benefit of children attending such preschools. All twelve preschools within Fremont and Page Counties have been participating in the Early Childhood Institute (QPPS) facilitated by Area Education Agency XIII for the past two years. The CCEA Board has strongly encouraged and continues to support these preschools in efforts to enhance their quality practices.



**% of children entering kindergarten with preschool experience**