

Corner Counties Early Childhood Area

**Fremont
County**



**Page
County**

Contact(s) for Area:

Pam Herzberg/Early Childhood Director
Corner Counties Early Childhood Area
c/o The Clarinda Foundation
P.O. Box 273
Clarinda, IA 51632
Ph: (712)542-3123
FAX: (712)542-4412
E-mail: ceca@iowtelecom.net
Website: <http://www.co.page.ia.us/offices/earlychildhood/index.htm>

Kim Behrens/Chairperson
Page County Treasurer
Page County Courthouse
112 East Main Street
Clarinda, IA 51632
Ph: (712)542-5310

Vision: "Every child, beginning at birth, will be healthy and successful."

Mission: "The Corner Counties Early Childhood Area Board will collaborate with community resources to nurture children so they will grow safe, healthy, socially well adjusted, and ready to learn."

When Family Support and Parent Education Program staff work with families to increase protective factors, they also help families build and draw on natural support networks within their family and community. These networks are critical to families' long-term success.

Protective factors are conditions in families and communities that, when present, increase the health and well-being of children and families. These attributes serve as buffers, helping parents to find resources, support, or coping strategies that allow them to parent effectively, even under stress.

Why are the programs we support important to reaching our vision and mission?

- They provide an opportunity for children to afford a high quality early learning environment.
- They provide families with children 0-5 resources, support, and encouragement.
- They provide caregivers and teachers professional development opportunities that will be reflected within the quality of the early learning environment.
- They provide children 0-5 opportunities for health screenings that have the potential to eliminate obstacles that could affect the child's learning ability.

COMMUNITY PLAN PRIORITIES:

1. Health status of children.
2. High quality family support and parent education opportunities.
3. High quality preschool environments with capacity to serve all preschool age children within the local early childhood area.
4. High quality child care environments with adequate capacity.

Services, Programs and Activities supported by the Corner Counties Early Childhood Area Board

- Child Care Nurse Consultant
- Child Care Home Consultant (CCR&R)
- Multiple Child Care Center Quality Improvement/Support Incentives
- Respite Care
- Early Childhood Area Service Coordination
- Positive Family Program
- Growing Strong Families Programs
- Stork's Nest
- Preschool Tuition and Transportation Grants
- Oral Screenings and Varnishes within Preschools
- Social-Emotional Screenings within Preschools
- Lead Screenings within Preschools
- Dinosaur School
- Extreme Makeover Project
- Literacy Program

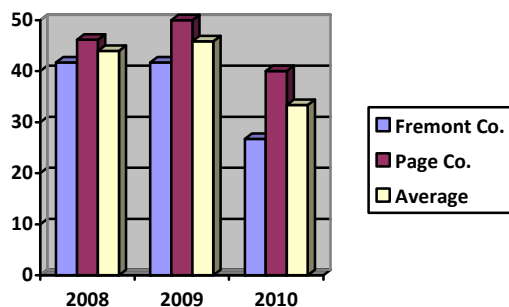
Did you know?

Research has shown that the following protective factors are linked to a lower incidence of child abuse and neglect.

- **Nurturing and Attachment:** Research shows that babies who receive affection and nurturing from their parents have the best chance of healthy development.
- **Knowledge of Parenting and Child Development:** There is extensive research linking healthy child development to effective parenting.
- **Parental Resilience:** Parents who can cope with the stresses of everyday life, as well as an occasional crisis, have resilience; they have the flexibility and inner strength necessary to bounce back when things are not going well.
- **Social Connections:** Research has shown that parents who are isolated, with few social connections, are at higher risk for child abuse and neglect.
- **Concrete Supports for Parents:** Families who can meet their own basic needs for food, clothing, housing and transportation and who know how to access essential services such as childcare, health care and mental health services to address family-specific needs, are better able to ensure the safety and well-being of their children.

Source: "Child Welfare Information Gateway" –Strengthening Families and Communities – 2011 Resource Guide.
This is a service of the Children's Bureau, Administration for Children and Families, U.S. Department of Health and Human Services.

Corner Counties Early Childhood Area Indicator: Number of confirmed abused children ages 0-5



The Corner Counties Early Childhood Area Board believes in providing families with resources and supports that focus on building upon the families' protective factors, increasing the families' abilities to succeed and the safe and healthy development of their children. The Corner Counties Board funds only those family support and parent education programs that have obtained a national accreditation or are in the process of receiving accreditation through the Iowa Family Support Standards. According to Prevent Child Abuse Iowa statistics the Corner Counties Area saw a 12.5% average decrease in the number of abused children ages 0-5 in 2010 as

compared to 2009. The Board is confident that the funds expended on family support programs had a role in this decrease. The Board continues to collaborate with and show support for the education efforts provided by Prevent Child Abuse Iowa, Community Partnerships for Protecting Children and the Fremont/Page Child Abuse Council.

What did our Family Support funds do during SFY'11 to impact families' protective factors?

174 Children participated in a family support program that included a home visitation component

106 Families participated in a family support program that included a home visitation component

315 Children participated in a group parent education program

253 Families participated in a group parent education program

- 81% of families improved or maintained healthy functioning, problem solving and communication.
- 95% of families increased or maintained social supports.
- 93% of families are connected to additional concrete supports.
- 89% of families increased knowledge about child development and parenting.
- 92% of families improved nurturing and attachment between parent(s) and child(ren)

What can you do to help?

- Create awareness.
- Share this information with others.
- Have discussions with expecting families or those with children ages 0-5.
- Request information as to how you can become a Corner Counties Early Childhood Area Board Member.
- Get involved.