

Corner Counties Empowerment Area

**Fremont
County**



**Page
County**

Contact(s) for Area:

Pam Herzberg/Empowerment Director
Corner Counties Empowerment Area
c/o The Clarinda Foundation
P.O. Box 273
Clarinda, IA 51632
Ph: (712)542-3123
FAX: (712)542-4412
E-mail: ceca@iowtelecom.net
Website: <http://www.co.page.ia.us/offices/earlychildhood/index.htm>

Kim Behrens/Chairperson
Page County Treasurer
Page County Courthouse
112 East Main Street
Clarinda, IA 51632
Ph: (712)542-5310

Vision: "Every child, beginning at birth, will be healthy and successful."

Mission: "The Corner Counties Empowerment Area Board will collaborate with community resources to nurture children so they will grow safe, healthy, socially well adjusted, and ready to learn."

Research has proven that high quality early learning experiences prepare children to successfully achieve the social and academic challenges of school-age programs. In order for children to develop these skills, children need opportunities to participate in early learning experiences that produce positive child and family outcomes.

Why are the programs we support important to reaching our vision and mission?

- They provide an opportunity for all children to afford a high quality early learning environment.
- They provide families with children 0-5, resources, support, and encouragement.
- They provide caregivers and teachers professional development opportunities that will be reflected within the quality of the early learning environment.
- They provide children 0-5 opportunities for health screenings that have the potential to eliminate obstacles that could affect the child's learning ability.

COMMUNITY PLAN PRIORITIES:

1. Health status of children.
2. High quality family support and parent education opportunities.
3. High quality preschool environments with capacity to serve all preschool age children within the local Empowerment area.
4. High quality child care environments with adequate capacity.

Services, Programs and Activities supported by the Corner Counties Empowerment Board

- Child Care Nurse Consultant
- Child Care Home Consultant (CCR&R)
- Multiple Child Care Center Quality Improvement/Support Incentives
- Empowerment Service Coordination
- Positive Family Program
- Growing Strong Families Programs
- Stork's Nest
- Preschool Tuition and Transportation Grants
- Oral Screenings and varnishes within Preschools
- Social-Emotional Screenings within Preschools
- Lead Screenings within Preschools
- Dinosaur School
- ECERS Observation and Consultation
- Extreme Makeover Project
- Child Fair
- Welcome Baby

Did you know?

- **Education:** Children who participate in high-quality preschool programs demonstrate higher academic achievement, are less likely to repeat a grade or require special education classes, and are more likely to graduate from high school and enroll in college.
- **Crime:** Students who attend high-quality preschools are less likely to participate in criminal activity during their juvenile or adult years, or be victims of child maltreatment or neglect.
- **Employment:** As adults, former preschool students are less likely to be unemployed and more likely to have higher earnings than similar students who do not participate in preschool programs.
- **Social Welfare and Health:** Former preschool students are less likely to depend on public assistance, become teenage parents, or endanger their health by smoking.

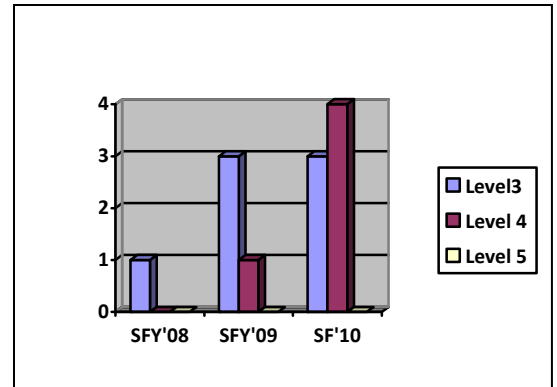
Taken from "The Economic Promise of Investing in High-Quality Preschool" - A Statement by the Research and Policy Committee of the Committee to Economic Development.

Corner Counties Empowerment Area Indicator:

Number of preschools with a Level 3, 4 or 5 QRS Rating

In State Fiscal Year 2008 the Corner Counties Empowerment Board took action to ensure that preschoolers were attending a quality rated preschool by tying receipt of funding to quality building.

The graph at the right reflects the quality building that has taken place with 7 of the 11 preschool settings (not including Head Start Preschools) within Fremont and Page Counties since SFY'2008. The quality measure represented for these preschools is the Quality Rating System. Providers in Levels 3-5 have made significant steps in meeting key indicators of quality in the areas of: professional development; health and safety; environment; family and community partnership and leadership and administration.



What did our "Preschool Programming Support" funds do to ensure that children grow safe, healthy, socially well adjusted and ready to learn?

115 Children attended preschool because they received full preschool tuition scholarships.
79 Children attended preschool due to accessible transportation.

163 Preschool children received an oral screening that is required for kindergarten entrance.
29% of those screened appeared to need further dental services.
6% of those appeared to need immediate dental service.

143 Preschool children received a lead screening that is required for kindergarten entrance.
4 of the **143** children were **identified as being lead poisoned.**

264 Preschool children received a social-emotional screening using the ASQ:SE.
19 of those children screened were identified as needing further assessment.
9 (47%) of the 19 identified did pursue further assessment.

32 Preschool children participated in a research based behavior modification classroom, Dinosaur School.
22% decrease of negative behaviors in the classroom as reported by teachers.

What can you do to help?

- Share this information with others.
- Have discussions with expecting families or those with children ages 0-5.
- Request information as to how you can become a Corner Counties Empowerment Area Board Member.
- Get involved.